

# ON-HIGHWAY TRUCK INVENTORY

SERIAL # TRK00481						
YEAR	MODEL	COLOR	ENGINE	TRANSMISSION	FRONT AXLE	REAR AXLE
2013	Cat CT660S (116" BBC)	Sable Metallic (Black)	CT13 475 HP	Fuller RTLO-18913A 13 speed manual	13,200 Meritor	Meritor RT-46-160P 46,000 lb. with diff locks in front and rear rear and lube pump
GEAR RATIO	REAR SUSP.	TIRES	WHEELS	FUEL TANK	WHEELBASE	OPTIONS
3.91	Hendrickson HAS-460-55 air ride	Continental HSR2 & HDL ECO PLUS 11R24.5W	24.5" Polished Aluminum all around	120 gallon polished on left side under cab	199"	Color Touch Screen Navigation System, LED Tail Lights, Air slide 5th wheel, all synthetic lubricants.



SERIAL # TRK00637						
YEAR	MODEL	COLOR	ENGINE	TRANSMISSION	FRONT AXLE	REAR AXLE
2013	Cat CT660S (116" BBC)	Winter white with black dump body	CT11 390 HP	Fuller RTO-16908LL 10 speed manual	20,000 Meritor	Meritor RT-46-164P 46,000 lb. with diff locks in front and rear rear and lube pump
GEAR RATIO	REAR SUSP.	TIRES	WHEELS	FUEL TANK	WHEELBASE	OPTIONS
4.10	Hendrickson HMX-460-54 walking beam type	Continental 425/65R22.5 HTC1 & 11R24.5 HDL ECO PLUS	22.5" polished aluminum fronts & 11R24.5" painted white steel	120 gallon polished on left side under cab	203"	18/20 Yard Stamped Elliptical body by Ox. 16' long, includes steerable lift axle with steel wheels & electric tarp system.



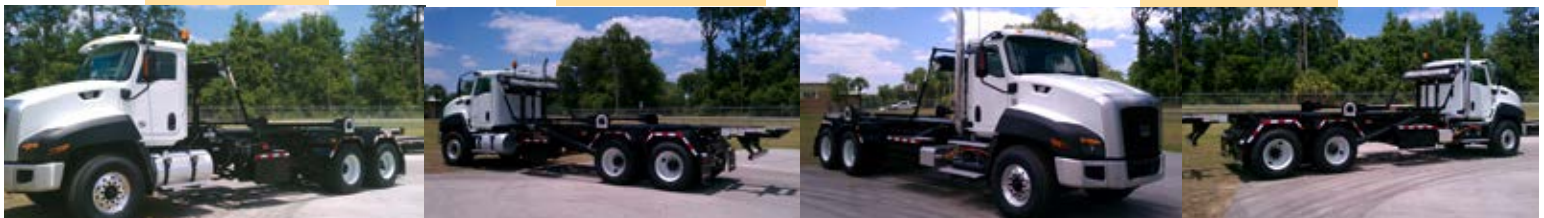
### 3 to choose from: SERIAL#'s: TRK00505, TRK00521, TRK00526

YEAR	MODEL	COLOR	ENGINE	TRANSMISSION	FRONT AXLE	REAR AXLE
2013	Cat CT660S (116" BBC)	Gold Metallic	CT11 390 HP	CX-31 Cat Automatic - 6 speed	20,000 Meritor	Meritor RT-46-164P 46,000 lb. with diff locks in front and rear rear and lube pump
GEAR RATIO	REAR SUSP.	TIRES	WHEELS	FUEL TANK	WHEELBASE	OPTIONS
5.38	Hendrickson HMX-460-54 walking beam type	Continental 425/65R22.5 HTC1 & 11R24.5 HDL ECO PLUS	22.5" polished aluminum fronts & 11R24.5" painted white steel	120 gallon polished on left side under cab	203"	18/20 Yard Stamped Elliptical body by Ox. 16' long, includes steerable lift axle with steel wheels & electric tarp system.



### SERIAL # TRK00568

YEAR	MODEL	COLOR	ENGINE	TRANSMISSION	FRONT AXLE	REAR AXLE
2013	Cat CT660S (116" BBC)	Winter white	CT13 430 HP	CX-31 Cat automatic - 6 speed	20,000 Meritor	Meritor RT-46-164P 46,000 lb. with diff locks in front and rear rear and lube pump
GEAR RATIO	REAR SUSP.	TIRES	WHEELS	FUEL TANK	WHEELBASE	OPTIONS
5.38	Hendrickson HMX-460-54 walking beam type	Continental 425/65R22.5 HTC1 & 11R24.5 HDL ECO PLUS	22.5" polished aluminum fronts & 11R24.5" painted white steel	120 gallon polished on left side under cab	250"	Galbreath U5-OR-174 roll off cable hoist. Includes inside cables, outside rails, 60,000 LB capacity. In cab controls. Steel fenders. Pioneer Rack-n-pinion tarp system & 20"x16"x48" tool box.



## SERIAL # TRK00543

YEAR	MODEL	COLOR	ENGINE	TRANSMISSION	FRONT AXLE	REAR AXLE
2013	Cat CT660S (116" BBC)	Winter white with black dump body	CT11 390 HP	CX-31 Cat automatic - 6 speed	20,000 Meritor	Meritor RT-46-164P 46,000 lb. with diff locks in front and rear rear and lube pump
GEAR RATIO	REAR SUSP.	TIRES	WHEELS	FUEL TANK	WHEELBASE	OPTIONS
5.38	Hendrickson HMX-460-54 walking beam type	Continental 425/65R22.5 HTC1 & 11R24.5 HDL ECO PLUS	22.5" polished aluminum fronts & 11R24.5" painted white steel	120 gallon polished on left side under cab	203"	18/20 Yard Stampede Elliptical body by Ox. 16' long, includes steerable lift axle with steel wheels & electric tarp system.



## SERIAL # TRK00231

YEAR	MODEL	COLOR	ENGINE	TRANSMISSION	FRONT AXLE	REAR AXLE
2012	Cat CT660S (116" BBC)	Cat yellow	CT13 475 HP	Fuller RTO-18918B 18 speed manual	16,000 Meritor	Meritor MT-40-14X-4DCR 40,000 lb. with diff. locks in front & rear
GEAR RATIO	REAR SUSP.	TIRES	WHEELS	FUEL TANK	WHEELBASE	OPTIONS
3.90	Chalmers 854-40L walking beam type	Continental 385/65R22.5 HTC1 & 11R22.5 HSR2	22.5" polished aluminum fronts & 11R24.5" polished aluminum	100 gallon polished on left side under cab	207"	Eaton Solo self adjusting clutch, Spicer Life SPL driveshaft, polished aluminum air tanks, dual chrome exhaust, fog lights, 6 auxillary toggle switches, heated power mirrors with built in turn signals. Chassis was built for a water tank but also added trailer parking brake valve and auxillary light socket at rear of frame. A 5th wheel can easily be added to make this a tractor.



**SERIAL # TRK01185**

YEAR	MODEL	COLOR	ENGINE	TRANSMISSION	FRONT AXLE	REAR AXLE
2013	Cat CT660S (116" BBC)	Red	CT13 475 HP	Fuller RTLO(F)-18981B 18 speed manual	13,200 Meritor	Meritor RT-46- 164P 46,000 with diff locks in front and rear and lube pump
GEAR RATIO	REAR SUSP.	TIRES	WHEELS	FUEL TANK	WHEELBASE	OPTIONS
3.91	Hendrickson HAS- 460-55 air ride	Continental HSR2 & HDL ECO PLUS 11R24.5	24.5" Polished alu- minum all around	120 gallon polished on left side under cab	189"	LED tail lights, Battery disconnect switch, air slide 5th wheel, all syn- thetic lubricants, headache rack.

